



**RICE CREEK WATERSHED DISTRICT
Notice of Public Hearing on
Johanna Creek Carp Barrier Project**

PLEASE TAKE NOTICE that the Rice Creek Watershed District Board of Managers has scheduled a public hearing to receive public comment under Minnesota Statutes 103B.251 on the ordering of the Johanna Creek Carp Barrier Project, **on Wednesday, September 14, 2022 at 9:00 a.m.** in the Mounds View City Council Chambers, 2401 County Highway 10, Mounds View, Minnesota. Public participation using interactive technology will also be possible using Zoom. Please see below for zoom instructions. In addition, by a declaration under Minnesota Open Meeting Law Section 13D.021, all meetings of the RCWD Board of Managers are in person and public while recognizing that a Manager may, based on advice from a health care professional, have a legitimate reason for not attending a meeting in a public place in person, such as COVID-19 exposure or infection, and in such circumstances may participate in the meeting remotely.

The total project cost will be approximately \$55,000. RCWD has obtained a \$50,000 BWSR Clean Water Fund grant for this project. RCWD's share of cost will be approximately \$5,000 and would be funded by general tax levy on real property within the watershed (Anoka County \$1,430; Hennepin County \$36; Ramsey County \$2,575; Washington County \$959). If you have any questions, please contact RCWD at 763-398-3070, 4325 Pheasant Ridge Drive NE, Suite 611, Blaine, MN 55449.

Join Zoom Meeting:

<https://us06web.zoom.us/j/89062317320?pwd=TXRWQ0taZ0ZzTldBVm5iZi9ETHZ2QT09>

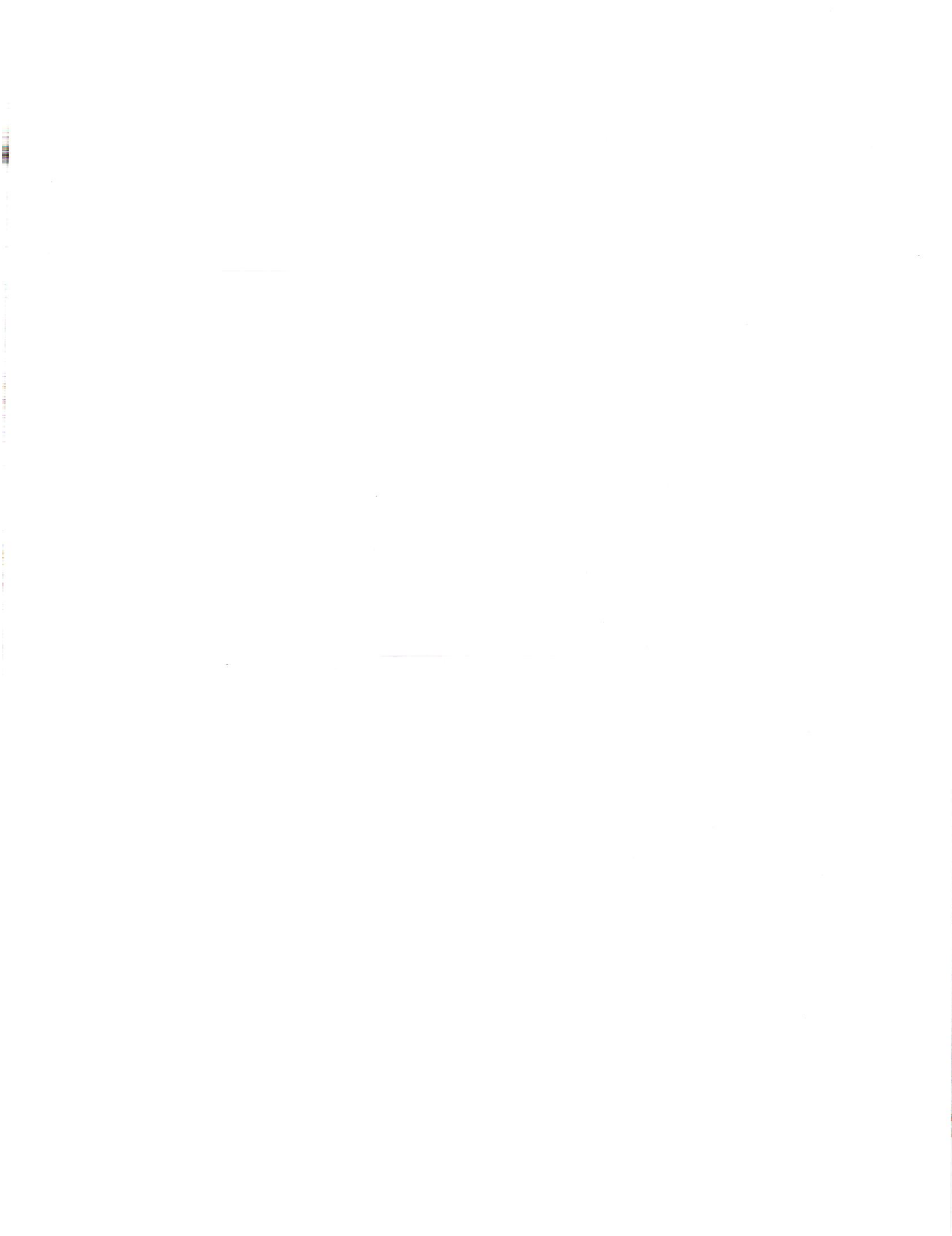
Meeting ID: 890 6231 7320

Passcode: 280331

Dial by your location: +1 312 626 6799 US (Chicago)

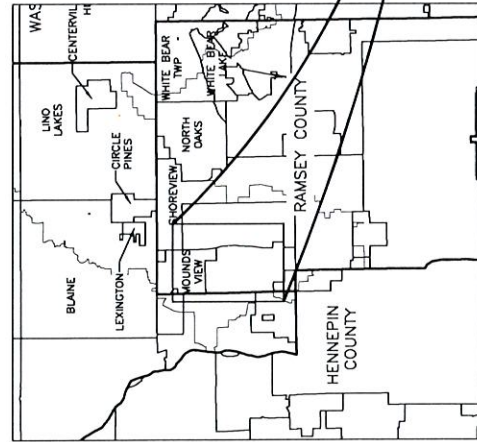
Meeting ID: 890 6231 7320

Passcode: 280331



RICE CREEK WATERSHED DISTRICT PLANS FOR LONG LAKE FISH BARRIER PROJECT NEW BRIGHTON, MINNESOTA

JULY 2022



GOVERNING SPECIFICATIONS

THE 2018 EDITION OF THE MINNESOTA DEPARTMENT OF TRANSPORTATION "STANDARD SPECIFICATIONS FOR CONSTRUCTION", INCLUDING CURRENT SUPPLEMENTAL SPECIFICATIONS, SHALL GOVERN.

DRAWING INDEX

- 1 COVER SHEET
- 2 PLAN & PROFILE
- 3 DETAILS

NOTES

1. HORIZONTAL CONTROL- ANY COORDINATES LISTED IN THIS PLAN ARE NAD83 MINNESOTA STATE PLANE, SOUTH ZONE, US FOOT.
2. VERTICAL CONTROL- ALL ELEVATIONS ARE NORTH AMERICAN VERTICAL DATUM OF 1982 (NAVD 82).
3. PROJECT BENCHMARK: MINOOT DISK (STAMPED 0280 G 1969) IN BRIDGE WING OVER INTERSTATE HIGHWAY 35W) = 529.43' (NAV288)
4. TRAFFIC CONTROL WORK ASSOCIATED WITH THIS PROJECT WILL BE CONDUCTED ADJACENT TO NUMEROUS ROADWAYS. THE CONTRACTOR SHALL PROVIDE ADEQUATE SIGNAGE FOR TEMPORARY TRAFFIC CONTROL AS IDENTIFIED IN PART 609 OF THE MN AUTCD MANUAL. A TRAFFIC CONTROL PLAN SHALL BE SUBMITTED WITH THIS PLAN. AT MINIMUM THE CONTRACTOR SHALL PROVIDE TYPE II BARRICADES WITH SIGNAGE DENOTING "WORK AHEAD" NEAR ALL WORK ON ADJACENT ROADWAYS.

UTILITY NOTES:

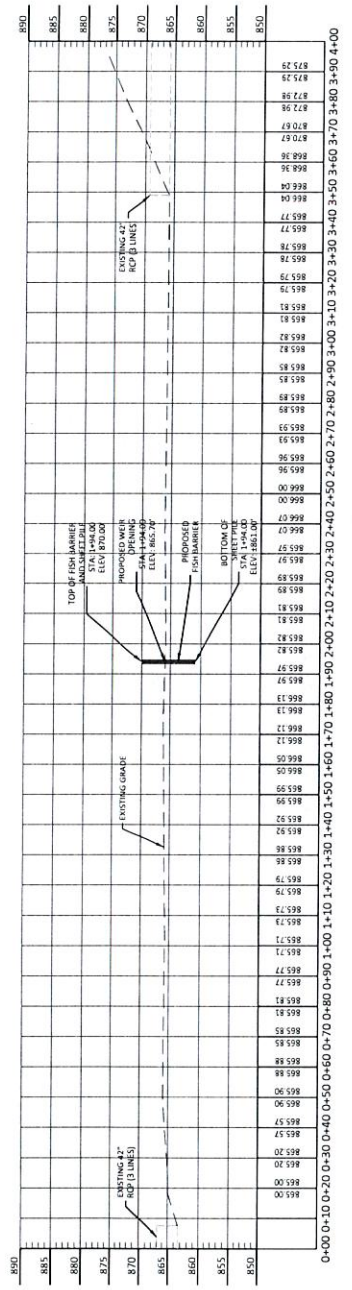
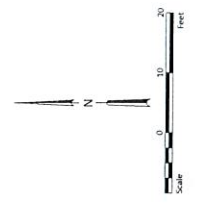
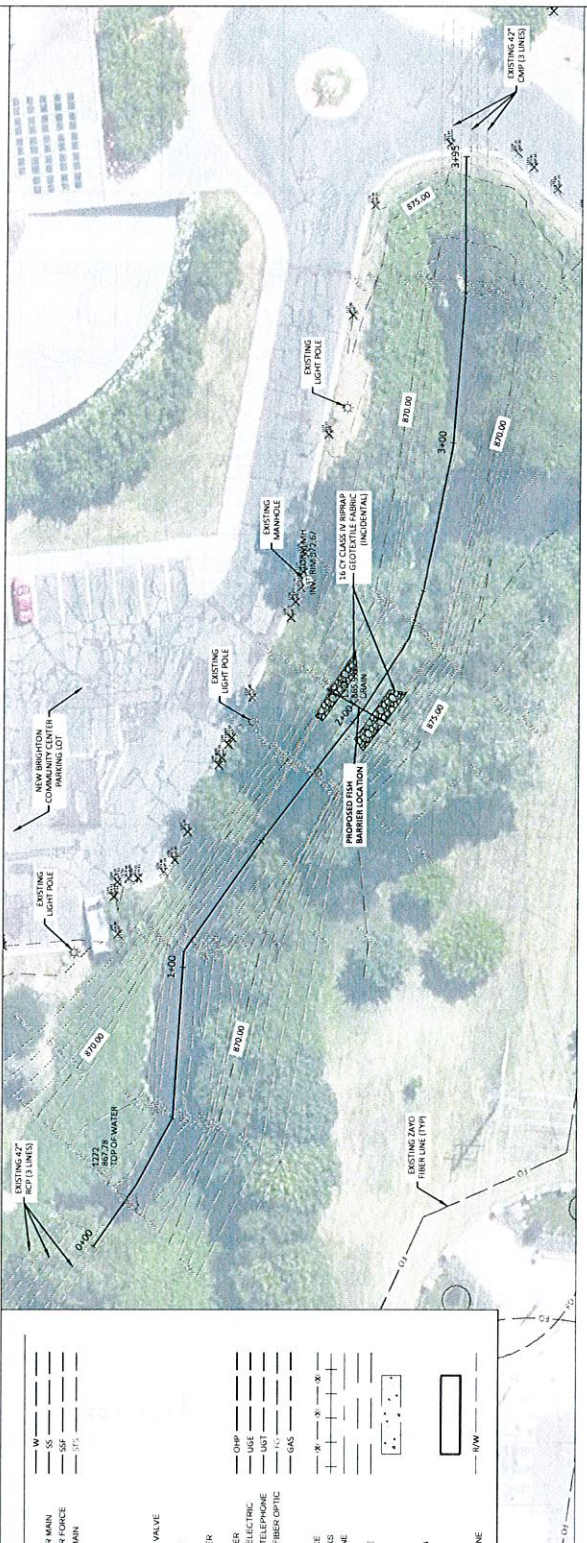
1. THE CONTRACTOR SHALL BE RESPONSIBLE UNDER MINNESOTA STATE STATUTE 216D AND MINNESOTA RULES 8500.01 AND 8500.02 TO CONTACT GOPHER STATE ONE CALL FOR THE LOCATION OF UNDERGROUND UTILITY FACILITIES IN PROXIMITY TO THE EXCAVATION SITE.
2. THE SUBSURFACE UTILITY INFORMATION IN THIS PLAN IS UTILITY QUALITY LEVEL D. THIS UTILITY QUALITY LEVEL WAS DETERMINED ACCORDING TO THE GUIDELINES OF CHASCE 38-02, ENTITLED "STANDARD GUIDELINE FOR THE COLLECTION AND DEPICTION OF EXISTING SUBSURFACE UTILITY DATA".
3. CONTACT "GOPHER STATE ONE CALL" FOR LOCATIONS OF BURIED UTILITIES. CALL (851) 454-0002 OR (800) 252-1166.



PRELIMINARY
Not for Construction

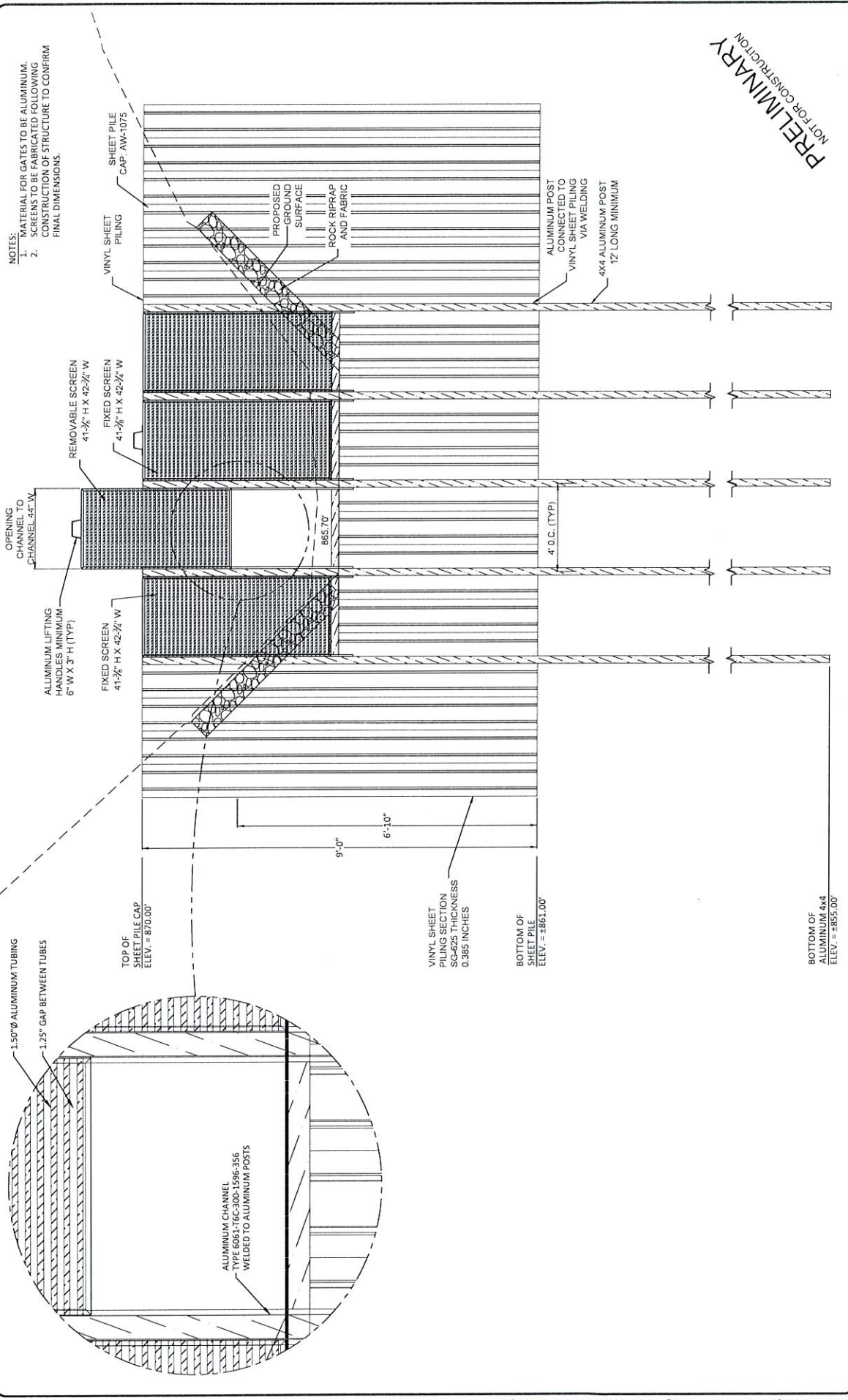
LEGEND

- W- WATER MAIN
- SS- SANITARY SEWER MAIN
- SF- SANITARY SEWER FORCE
- SM- STORM SEWER MAIN
- SI- STORM INLET
- MANHOLE
- FW- FIRE HYDRANT
- GV- GATE VALVE
- WSV- WATER SERVICE VALVE
- UP- UTILITY POLE
- W- W/ COPY WIRE
- UT- UNDERGROUND TELEPHONE
- RO- ROAD
- TE- TELEPHONE RISER
- OP- OVERHEAD POWER
- UE- UNDERGROUND ELECTRIC
- UT- UNDERGROUND TELEPHONE
- RO- ROAD
- FO- FIBER OPTIC
- GS- GAS MAIN
- CH- CHAIN LINK FENCE
- RT- RAILROAD TRACKS
- HC- HOND CENTERLINE
- CE- CONCRETE
- CE- CONCRETE EDGE
- CON- CONCRETE
- SE- SPOT ELEVATION
- B- BUILDING
- R/W- RIGHT OF WAY LINE



PRELIMINARY
 NOT FOR CONSTRUCTION

HOUSTON engineering, inc.		Drawn by APD	Date 5/17/2022	Scale AS SHOWN	LONG LAKE FISH BARRIER PROJECT RICE CREEK WATERSHED DISTRICT NEW BRIGHTON, MN	PLAN AND PROFILE	SHEET 2
No.	Revision	Date	By	PROJECT NO. 5555-0330	PROJECT NO. 5555-0330	PROJECT NO. 5555-0330	PROJECT NO. 5555-0330



- NOTES:
- MATERIAL FOR GATES TO BE ALUMINUM. SCREENS TO BE FABRICATED FOLLOWING CONSTRUCTION OF STRUCTURE TO CONFIRM FINAL DIMENSIONS.

PRELIMINARY
 NOT FOR CONSTRUCTION

		Drawn By APD	Date 5/17/2022	Scale AS SHOWN	PROJECT NO. 5555-0330	SHEET 3
LONG LAKE FISH BARRIER PROJECT RICE CREEK WATERSHED DISTRICT NEW BRIGHTON, MN		Checked by LDO			DETAILS	

